

Community Partners

Changing the Odds 2016-2017



COMMUNITY PARTNERS
changing the odds

Community Partners is Home To:
Housing Partnership and Parent-Child Center

#CHANGINGTHEODDS

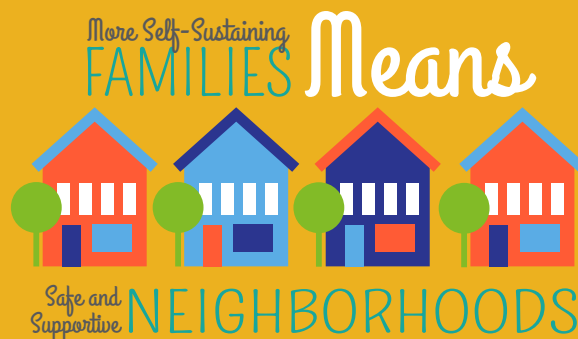
Community Partners works to change the odds for our children facing social, emotional and financial adversity. How do we do this? With a unique blend of proven services, families can break through barriers to achieve success and stability.



Community Partners is a family and community development agency that focuses on three critical areas that build family skills for social change in Palm Beach County.

1. Housing & Financial Empowerment Services
2. Community Services
3. Child & Family Mental Health Services

WWW.CP-CTO.ORG



who

Actively Contribute to Our
COMMUNITIES



Welcome to Changing The Odds.

A community is more than road signs and flickering street lights. It is more than geography and boundaries drawn up by city councils.

A community is living, breathing history, telling the biographies of everyone who have planted roots in that ground.

The strength of any community lies in its greatest asset: **the children and families who choose to call that place home.**

A local non-profit which has served Palm Beach County for over 30 years, Community Partners is proud to serve as an emissary between families and their goals – be it homeownership, owning a business, cultivating a better relationship with their child, sobriety or living in a safer community.

Through our holistic approach of blending housing, community and behavioral health services, we are building stronger children, stronger families and stronger communities. We support our clients as they work to build skills that cultivate self-sufficiency, stability and success, all the while fostering the promise of a brighter future.

Community Partners accomplishes this via our ability to identify and leverage resources that help develop both community sustainability and efficacy. We know that in doing so, we are cultivating positive change for Palm Beach County families as we understand that Changing The Odds starts at home.

We'd like to welcome you as we continue our journey of Changing The Odds for children and families facing social, emotional and financial adversity in Palm Beach County.

Join our community.

We all belong here.

A breakthrough approach for struggling families.

Community Partners is Changing the Odds by finding solutions to problems confronting Palm Beach County children and families in their everyday lives. We are a family and community development agency, effectively blending housing, community, and behavioral health services that help families transform their lives from within. This groundbreaking, comprehensive approach is used to fulfill CP's commitment to Changing the Odds for our children and families facing adversity.

Community Partners
served over
10,000 clients
last year!

*Community Partners is Home To:
Housing Partnership and Parent-Child Center

COMMUNITY PARTNERS Highlight

IMPACT 100 GRANT AND SAN CASTLE

When people think of the Palm Beaches, they envision an idyllic location like Manalapan – azure water lapping gently against white sand beaches.

While this is a gorgeous vision of South Florida, it is not an entirely accurate depiction of the area as a few miles to the west (and within the same zip code) lies San Castle.

An unincorporated community between Lantana and Boynton Beach, San Castle falls within the highest percentile for inadequate pre-natal care and school-readiness testing. The high school graduation rates are dismal, the teen pregnancy rates number among the highest in Palm Beach County and the crime and

poverty rates in the community are also higher than the county average. Gang violence is a serious issue in San Castle and one that seriously affected the life of 15-year-old San Castle resident, Nicholas.

Prior to the opening of the San Castle Community Center, Nicholas had to walk a mile to play basketball. In the course of a single year, he was attacked five times by local gangs. Two of these brutal beatings resulted in hospitalization for a concussion and stitches for a severe head wound.

Nicholas considers himself lucky. He has healed and now, thanks to the new San Castle Community Center – he has a safe place to play basketball. Unfortunately, the emotional scarring from experiencing this brutal kind of violence doesn't heal as easily as flesh and bone.

Thanks to the generosity of the Impact 100 Grant, Community Partners is establishing the San Castle Mental Health Program. Long-term exposure to violence and emotional or physical trauma can lead to symptoms of depression, anxiety, and anger. Community Partners' Child and Family Mental Health division has a long history of successfully providing the therapy and skill-building necessary to overcome these symptoms.

Community Partners' ethos is to work with residents. We are not there to "fix" people but rather to learn from one another and draw upon experiences and strengths to Change The Odds in a positive and tangible way.

Resident engagement has proven to be a challenge in the San Castle community. The population is culturally diverse and has a deep distrust of social service programs. This stems from both a fear of the stigma of mental health issues and the fact that the unincorporated community has been disenfranchised by not having proper representation by city officials.

Also playing into this is the fact that San Castle residents have long lived under the threat of gang activity and violent crime.





When Community Partners first engaged with San Castle, we partnered with a few resident leaders who provided valuable insight into the inner workings of the community and after much research and thought, we developed a tiered and non-threatening approach to engaging San Castle residents:

TIER 1: Educational seminars for larger groups that encourage a one-time attendance and feature topics like, "How to Engage Your Child's Teacher" or "Nutrition 101."

TIER 2: Smaller groups attended by community peers, addressing issues such as self-esteem, anger management, or healthy relationships.

TIER 3: Individual or family therapy sessions to address trauma, depression, anxiety, and family stability.

In addition to servicing the therapeutic needs of the community, Community Partners' therapists participate in events like family fun days or neighborhood clean ups, thereby enmeshing themselves completely and solidifying their

reputation as a trusted and valuable member of the San Castle community.

Having a healthy community leads to healthy families which finally leads to healthy individuals.

Community Partners wants to Change The Odds in San Castle and we ask you to join us in our mission of doing so. We invite you to come visit us and meet the children and families we can impact together.

We can Change the Odds. For Nicholas. For our families. For the future.

For good.



"The impact 100 grant will enable Community Partners to further engage with San Castle residents regarding behavioral health issues in the community. By fully integrating resources directly within the community, we can work together to change the odds."

*Susan Eby
Vice President
Child and Family
Mental Health Services*

ACES

Adverse Childhood Experiences

Abuse, neglect and other traumatic experiences which happen to people under the age of 18.

We are addressing ACES through our two generational and holistic approaches. We work with parents to understand the impact that trauma has while also addressing strategies to assist parents in mitigating the adverse experiences for their children.

Types of ACES

Abuse

- Physical
- Emotional
- Sexual

Neglect

- Physical
- Emotional

Household Challenges

- Mental Health
- Incarcerated Relative
- Mother Treated Violently
- Substance Abuse
- Divorce

Impact of ACES

People with **6 or more** ACES die nearly **20 years earlier** on average than those without ACES

Council for Exceptional Children estimates **lifetime** costs associated with child maltreatment at **\$124 billion**

Possible Risk Outcomes

Behavior

- Lack of Physical Activity
- Smoking
- Alcoholism
- Drug Use
- Missed Work

Physical & Mental Health

- Severe Obesity
- Diabetes
- Depression
- Suicide Attempts
- STDs
- Heart Disease
- Cancer
- Stroke
- COPD
- Broken Bones

Important

- ACES are very common
- Almost two-thirds of adults surveyed reported at least one ACE, and the majority of respondents who reported at least one ACE reported more than one
- ACES are strong predictors of health risks and disease from adolescence to adulthood
- This combination of findings makes ACES one of the leading, if not the leading determinant of the health and social well-being of our nation

Our Specialized Service Approach

Community Partners looks at the child in the context of the family and the family in the context of the community. Our holistic blend of services focus on three critical areas necessary to facilitate social change: Housing and Financial Empowerment, Child and Family Mental Health and Community Services.

Housing and Financial Empowerment Services

A home is more than just the concrete, stucco and tile that go into it. A home is a place to raise a family, be part of a community and build wealth. Community Partners specializes in helping families navigate the complicated channels of the housing market, learn how to attain financial stability and maintain assets well into the future. Additionally, we also provide permanent, affordable and supportive housing in community settings where neighbors can unite in support and friendship.

Programs: Homebuyer, Prosperity Center, Financial Counseling, Supportive Housing.

Community Services

A flourishing community is one that recognizes and celebrates its inherent strength. The success of Community Partners' families is a direct reflection of trusting relationships that encourage confident parents, mentors, teens, children and residents to engage and advocate as stakeholders in the betterment of their lives and their communities.

Programs: BRIDGES Neighborhood Centers (Belle Glade, Pahokee, Highland Elementary, Lake Worth, Riviera Beach and Boynton Beach), Youth Enrichment Academies at Pahokee and Pioneer Park Elementary Schools, Mentoring Programs at Highland, Pioneer Park and Pahokee Elementary Schools as well as Lake Worth Middle School,

Teen Outreach Program (TOP), San Castle Community Center, Healthier Neighbors (Riviera Beach and West Palm Beach), Healthier Lake Worth, Healthier Glades, Safe Kids Palm Beach County and Dialogue To Change groups. Major funders for these programs include the Children's Services Council of Palm Beach County, Palm Healthcare Foundation, Early Learning Coalition, Town of Palm Beach United Way and United Way of Palm Beach County.

Child and Family Mental Health Services

Children thrive in a home committed to the ideals of education, safety, good health, love and trust. This is why Community Partners puts such a strong focus on early childhood development, socio-emotional wellbeing and positive parenting. We specialize in treatment for trauma, depression, attention-deficit disorder, anxiety and other issues affecting children and teens so they can achieve academic success and reach important goals and life milestones.

Programs: Therapy services, Crossroads Community Care, Positive Parenting Program (Triple P), Substance Abuse services, Trauma Care and Targeted Case Management.



Every family takes a different path to self-sufficiency, economic stability and resiliency. At Community Partners, we work with families to forge their own paths to success.

Meet The Martin Family.

1



The family hears about “Family Fun Night” at BRIDGES at Highland which is also Lily’s elementary school.



2



4



Mom goes to Village for Change to help with a substance abuse addiction issue. During this stressful time, Lily and Ben receive therapeutic services to learn how to cope.



5

Did You Know?

Palm Beach County taxpayers save **\$23,000** a year, on average, for every child who doesn't end up in foster care.

Through meeting with the Navigator, Mom and Dad are interested in talking to counselors from the visiting Prosperity Center for tax preparation and budgeting support.



3



The Navigator hears from Mom that Lily is facing challenges in elementary school and Ben is struggling with outside influences in high school. Through Community Partners, Lily gets linked to a dedicated mentor and Ben joins the Teen Outreach Program to learn better life choices at his high school.

With support firmly in place, Mom and Dad can now focus on purchasing their own home. Community Partners Home Ownership program guides them through the steps needed to build equity and create economic stability to realize their dream.



6



Healthier
Lake Worth

The whole family is healthy, happy and grateful, living in their own home and thriving in school and work. They are so grateful to be a part of this wonderful community and share their experiences and encourage others to do the same by volunteering with other residents to make Lake Worth a healthier place, therefore actively contributing to their community.

“Communities that invest in early childhood development see a **10% annual rate of return** on their money.”

NOBEL LAUREATE ECONOMIST JAMES HECKMAN

COMMUNITY PARTNERS HIGHLIGHTS

HURRICANE IRMA

Community Partners' post-Hurricane Irma efforts were befitting of the organization's name as the community banded together as partners to ensure that everyone affected got the help they needed – particularly in Stonybrook – a Section 8 apartment complex located in Riviera Beach.

The day after the hurricane, Director of Education and Innovation Jibby Ciric went out to the community to assess damage and provide support. Half the residents didn't have power and some residents suffered flooding and mold damage. Worst yet, during the storm, over 40 residents had to be evacuated when the roof blew off one of the buildings.



Accompanied by CEO Scott Hansel and Director of Targeted Case Management Cleveland Wester, CP staff got a firsthand look at the damage and started to formulate a plan for post-recovery efforts. Connecting with Urban Youth Impact and the Children's Services Council of Palm Beach County, Community Partners was able to secure donations of charcoal, clothing and food for Stonybrook residents. They also reached out to local businesses and received a magnanimous response. Publix on Palm Beach donated 70 frozen turkeys, the West Palm Beach Marriott donated ice and Restaurant Depot donated coolers.



Most impressive were the Palm Beach County residents responding to a social media post asking for donations. Some of them hadn't even heard of Community Partners and yet, they pulled up to the building with cars filled with non-perishable items, clothing, linen and cleaning supplies. By day three, supplies were getting into the hands of the residents thanks to a concerted effort by CP and Stonybrook's resident ambassadors. Sixteen in total and with one representative for each building in the complex, the Stonybrook Ambassadors organized a grassroots effort comparable to Red Cross disaster relief efforts - assessing needs, triaging situations and dispensing supplies.

By working together and utilizing local resources, Community Partners exemplified their mission statement of Changing The Odds for children and families facing adversity.



Community Partners brought a little bit of Bollywood to the Palm Beaches on Saturday, November 18, 2017 for the second annual Tea at the Taj fundraiser, sponsored by AmTrust Bank, Celedinas Insurance Group, Holyfield and Thomas and others.

Maharaja Jay Zeager and Maharani Angela Sarlo held court at Ragtops Automobile Museum in West Palm Beach, inviting all to join them for a night of dinner, shopping and entertainment.



With delicious cuisine from Aroma Restaurant, a custom-made Chai Caramel Cream Ale from Due South Brewing, teas

from Serenity Garden Tea House and a bazaar selling everything from spices to sunglasses to stationery, Community Partners was proud to collaborate with local businesses to bring this event to Palm Beach County.

We hope our guests had fun and would like to thank them again for supporting us and our mission to Change The Odds for Palm Beach County's children and families facing adversity.

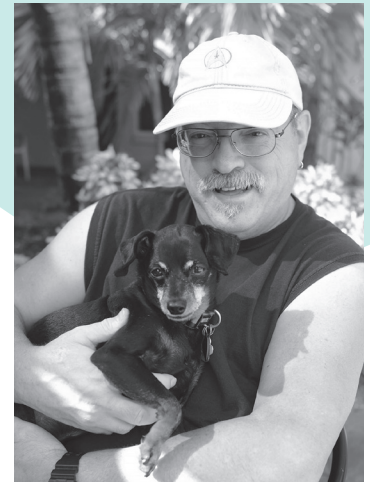


ST. CHARLES PLACE



For those with a mental health diagnosis, St. Charles Place is a safe spot to call home. In addition to receiving therapy coordination, residents are also connected with community resources and advocates who ensure they lead full, healthy and happy lives.

One of the key tenets of St. Charles Place is its emphasis on remaining an affordable community. Residents pay 30% of their monthly income in rent. For example, a resident earning \$700 a month would pay \$150 in rent.



With 11 units, St. Charles Place is home to four women and seven men, all of whom receive social security benefits. Four of the residents have part-time jobs, three have their own vehicles and all are able to navigate the public transportation system with ease.

St. Charles Place has been an oasis in the heart of West Palm Beach since 2004 and we will continue working with residents and the community to ensure it stays that way long into the future.

COMMUNITY PARTNERS HIGHLIGHTS



WELCOME HOME. CELENE'S STORY.

Celene has been bucking the odds her whole life.

Born in Riviera Beach in the late 1960s with a litany of health issues, Celene was told that she wouldn't live long.

Fifty years later, Celene's cheerful grin is the first thing customers see when they enter their neighborhood McDonalds as she serves up big smiles alongside Big Macs.

Celene came to Community Partners because she needed help with housing.

"She is ambitious and intelligent. She speaks English, Creole and a little bit of Chinese," said supportive housing coordinator Shanya. "We worked with her for a year before things started to happen."

Shanya found Celene a new apartment complex being built in the heart of West Palm Beach where tenants typically pay 30% of their income towards rent. Since Celene's salary is just above the federal poverty level, she pays roughly \$300 in rent every month.

"I called Celene and told her that she had an appointment at the apartment complex and she told me that she couldn't go because she had to work," Shanya explains.

So, Shanya drove to McDonalds and met with Celene's manager. The manager was more than willing to work with Celene and change her schedule around.

Shanya laughs as she remembers Celene's joy upon finding out she had gotten approved for the apartment.

"She screamed! 'What?! I was wrong! It happened!' Fifty years old and this is her first apartment."

Now that Celene doesn't have to worry about her living situation anymore, she can focus on issues that she put on the back burner – like her physical health.

Tangible change takes hard work, perseverance and collective effort.

"People would either not see her or take advantage of her situation," Shanya said. "Celene would have slipped through the cracks. But we worked together, we involved the community and other resources and together, we Changed The Odds."

LOVE, GRACE AND COMMUNITY. MIRIAN'S STORY

When Mirian first arrived at BRIDGES at Highland, she had one goal in mind - to improve her English language skills.

A recent immigrant from the Dominican Republic, Mirian knew that the key to success was communication and when she heard about the free language classes BRIDGES offered, she knew she must check it out.

"When I came here, I was pregnant. I didn't drive and I couldn't do anything," she said.

Seeing her potential for leadership, Outreach Coordinator Jose convinced her to become a facilitator so she could help other parents unlock their potential.

"The last program I did focused on the community. We discussed the principle problem for us which is safety and security," said Mirian. "Officer Benito came and explained about community policing and how they can help us."

Before moving to the United States, Mirian was a lawyer. She had been practicing family law for six years and left her career when her first son was born.

Now, Mirian works in Child Watch at the very same BRIDGES site which connected her to her new community.

Although it is a far cry from courtrooms and filing briefs, Mirian loves her new position. She says practicing law and working in child watch has more similarities than people would think.

"You help people. You help families," she said. "Here, it is a good space for moms. Sometimes at home, moms don't know how to help their babies learn."

A woman who prioritizes education, Mirian stresses its importance to her children and seems on a continual quest for self-improvement.

"I want my babies to behave well," she said. "It's so important to study. It is important to respect others and your elders. It is important to respect yourself and respect God."

Above all, Mirian is suffused with gratitude. Gratitude for living in the United States, gratitude for BRIDGES and gratitude for her ability to help her community.

"In my country, we don't have many opportunities to help people like this," she said. "People want to help but they don't have an organization they can join."

Her voice catches as she looks around.

"I get emotional," she says with a soft smile. "I like participating in the activities here. I am so grateful."



Community Partners of South Florida Consolidated Audited Financial Statements of Housing Partnership, Inc. and Parent-Child Center, Inc. For the Year Ended September 30, 2017

STATEMENT OF ACTIVITIES

Revenues

Government Grants and Contracts	\$8,225,261
Contributions and Patient Services	\$4,154,732
Indirect Income	\$27,008
Consulting Fees and Other Revenues	<u>\$663,676</u>
Total Revenues	\$13,070,677

Expenses

Community Revitalization	\$7,061,735
Health and Human Services	\$5,227,679
Management and General	\$660,093
Fundraising	<u>\$54,755</u>
Total Expenses	\$13,004,262

Change in Net Assets \$66,415

Net Assets, Beginning of Year \$5,191,936

Net Assets, End of Year **\$5,258,351**

STATEMENT OF FINANCIAL POSITION

Assets

Cash and Cash Equivalents	\$2,454,416
Cash and Cash Equivalents-Designated	\$1,060,600
Accounts and Grants Receivable, Net	\$1,483,157
Mortgages Receivable, Net	\$5,274,278
Real Estate Inventory	\$43,042
Other Assets	\$41,928
Related Party Receivable	\$32,251
Property and Equipment, Net	\$1,789,940
Community Land Trust	<u>\$870,000</u>
Total Assets	<u>\$13,049,612</u>

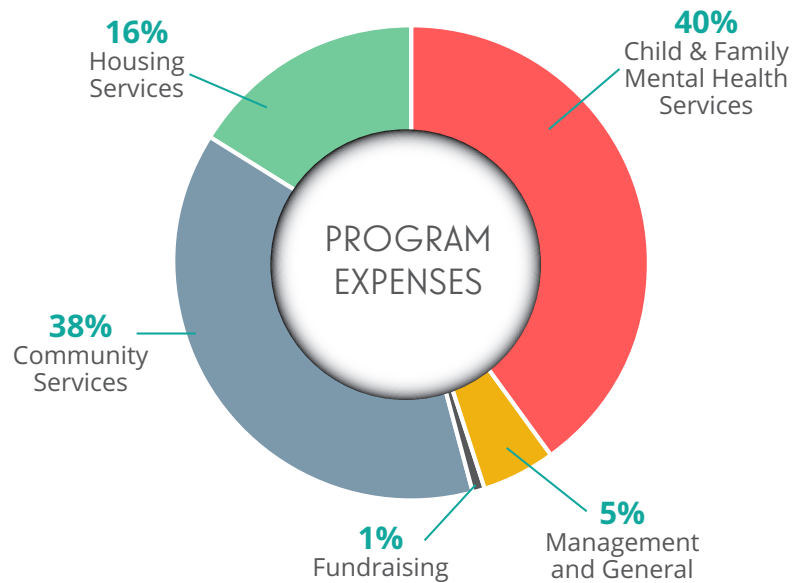
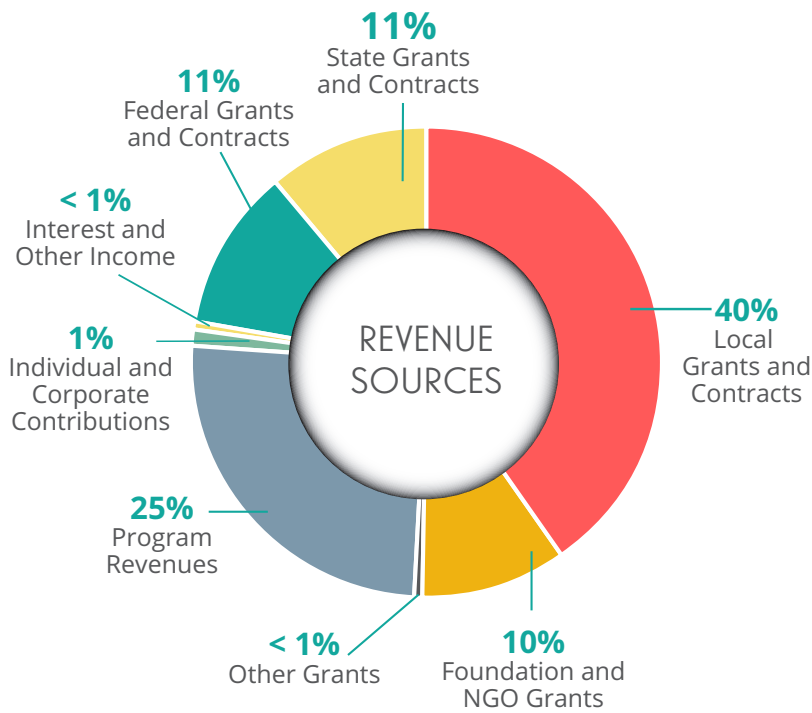
Liabilities

Accounts Payable, Accrued Expenses and Other Current Liabilities	\$562,104
Mortgage Payable	\$334,090
Agency Payables and Refundable Advances	\$6,895,067
Total Liabilities	<u>\$7,791,261</u>

Ending Net Assets

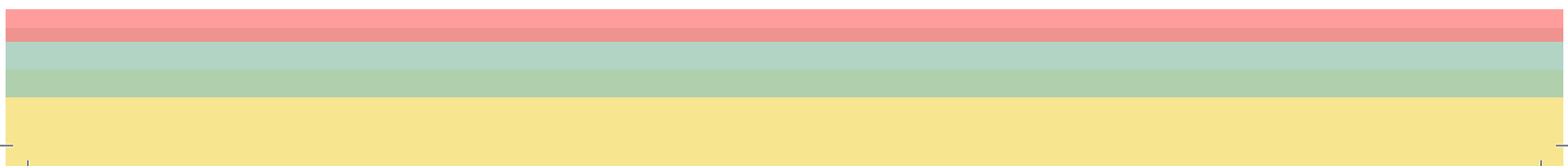
Unrestricted - Equity in Fixed Assets	\$1,455,850
Unrestricted - Equity in Community Land Trust	\$870,000
Unrestricted - Undesignated	\$2,099,055
Restricted - NeighborWorks America	<u>\$833,446</u>
Total Ending Net Assets	<u>\$5,258,351</u>

Liabilities and Net Assets **\$13,049,612**



Contributions benefit the Parent-Child Center, Inc., d/b/a Community Partners, a not for profit tax exempt organization. A COPY OF THE OFFICIAL REGISTRATION AND FINANCIAL INFORMATION OF THE PARENT-CHILD CENTER, INC., CH3096, MAY BE OBTAINED FROM THE DIVISION OF CONSUMER SERVICES BY CALLING TOLL FREE 1-800-435-7352 WITHIN THE STATE OF FLORIDA. REGISTRATION DOES NOT IMPLY ENDORSEMENT, APPROVAL OR RECOMMENDATION BY THE STATE. The Parent-Child Center, Inc. receives 100% of each contribution.

Contributions benefit the Housing Partnership, Inc., d/b/a Community Partners, a not for profit tax exempt organization. A COPY OF THE OFFICIAL REGISTRATION AND FINANCIAL INFORMATION OF THE HOUSING PARTNERSHIP, INC., CH8174, MAY BE OBTAINED FROM THE DIVISION OF CONSUMER SERVICES BY CALLING TOLL FREE 1-800-435-7352 WITHIN THE STATE OF FLORIDA. REGISTRATION DOES NOT IMPLY ENDORSEMENT, APPROVAL OR RECOMMENDATION BY THE STATE. The Housing Partnership, Inc. receives 100% of each contribution.



Agents of Change

Community Partners would like to thank the following for working with us to Change The Odds for Palm Beach County's children and families.

HOUSING SERVICES

South East Florida Behavioral Health Network
NeighborWorks America
United Way Of Palm Beach County
Bank Foundations
Palm Beach County Board of County Commissioners
US Dept. of Housing and Urban Development
US Dept. of Health and Human Services
Lost Tree Village Foundation
Town of Palm Beach United Way
City of West Palm Beach

COMMUNITY SERVICES

Children Services Council of Palm Beach County
Early Learning Coalition of Palm Beach County
Palm Healthcare Foundation
United Way Of Palm Beach County
NeighborWorks America
Palm Beach County Board of County Commissioners
FL Dept. of Health

CHILDREN AND FAMILY

MENTAL HEALTH SERVICES

Medicaid & Private Insurance
Children Services Council of Palm Beach County
South East Florida Behavioral Health Network

Palm Beach County School District
Quantum Foundation
Palm Beach County Board of County Commissioners
Florida Dept. of Juvenile Justice
Jim Moran Foundation
ChildNet
Impact 100
NeighborWorks America
Town of Palm Beach United Way
United Way Of Palm Beach County

CORPORATE & OTHERS

Safe Kids Worldwide
JPMorgan Chase
Wells Fargo Foundation
The M&T Charitable Foundation
PNC Foundation
Bank of America
TD Charitable Foundation
BB&T
Valley National Bank
Florida Community Bank
SunTrust Foundation
HSBC
New York Community Bancorp (Amtrust Bank)
Center for the Study of Social Policy
Bank United
Extraordinary Charities
Mercantil Commerce Bank
The Anne Goss Foundation
Memorial Healthcare System

Holyfield & Thomas LLC
The Celedinas Agency
Moonfest West Palm Beach Inc.
Lena's Flowers
Kiwanis Club of Riviera Beach
Lojic
The Partnership, Inc.
Children's National Health Systems

INDIVIDUAL DONORS

Aileen Josephs
Aimee Cernicharo
Albert Williams
Allison LaBossiere
Amanda Affleck
Amy Ostertag
Amy Roberts
Andrea Stephenson
Anil and Kila Mistry
Anndra Chintala
Anne Haring
Arlyn Camacho
Avril Dhana
Barbara Rogoff
Bergen Aughey
Beth Simon
Billy and Cristina Hungerford
Brewster Cole
Brian and Dee Lynott
Briana Pallerine
Camryn Del Rio Linton
Carol Sherman
Chanda George

Charlotte Pelton
Christina Lambert
Christopher Raymond
Claire Chardon
Claire Loukas
Curtis Verity
Dale Eby
Damien Dellaroze
David J. Thomas
Debra Kelly-Ennis
Debru Aklil
Dennis Connor
Denzil Seedial
Derrick Vlad
Donna Ferreri
Dylan Hansel
Elizabeth DeBrule
Ezra Krieg
Felice Shearer
Francine Mantyh
Gina Regalado
Gregory and MJ Demetriades
Heidi Dixon
Idalia Baudó
Jaime-Lee Brown
Janna Zaidspiner
Jason Blum
Javier Rodriguez
Jeffrey and Cinthya Albert
Jennifer Craft
Jerry Leakey
Jessica Cecere
Jimmy Middlebrook
John Arslanian
John Elder
Julie Khanna
Karen Harpenau
Kari Bouldin
Kari Levy
Kathy Wall
Kelly Williams

Kelsey Aughey
Kerry Gallagher
Kianta Prince-Bryant
Kimberly Rodale
Kimberly Weikel
Kristen Sciotto
Kristine Brinez
Larry McNutt
Laura Barry
Laura Wissa
Laurel Baker
Lauren A. Costa
Lauren Russo
Lauren Sarkis
Laurie Sharma
Lee Williams
Leomar Anzalone
Leslie Byck
Lillian Khanna
Linda Esposito
Lisa Banionis
Lisa Huertas
Lori Stenson
Luis Dorelle
Lynda Charles
Maggi Rosenberg
Manda Galin
Marcelle Burke
Maria Becker
Marika Stone
Maritza Ibarra
Mark Montgomery
Marla Friedman
Martha Reyes – Havana Restaurant
Mary Liguori
Mary-Lee Widder
Maura Ziska
Michael DiBartolo
Michelle DeSilva
Michelle Fennessy
Michelle Gardner

Molly Apple
Molly DeMarcellus
Monica Alexander
Monique Naredo
Nancy Connor
Nicole Mugavero
Nicole Munder
Nicole Potrekus
Nikiis Doherty
Olga Soto
Oratore Woodward
Pamela Moss
Paul Leser
Ramprasad Gopalan
Raymond Graceffo
Rebecca Wisnicki
Robert Wise
Robin Hansel
Roland Burrell
Ronald and Helena Macklin
Roy Khanna
Sabra Ingeman
Sandra Munoz
Sara Griffen
Sarah Joers
Scott Hansel
Scott Keiser
Sharon Blanchard
Sheri Middlebrook
Sonny Maken
Suzi Eby
Tara Kolnick
Tayla Carey
The Hait Family
Tracy Piske
Valerie Padon
Whitney Bylin
William and Mary Creslein
Xiomí Penn

Changing The Odds by the Numbers

Child and Family Mental Health Services

1000+

PARENTS SUCCESSFULLY COMPLETED POSITIVE PARENTING PROGRAM

85%

OF THERAPY SERVICES CLIENTS SHOWED AN INCREASE IN DAILY FUNCTIONING

95%

OF TARGETED CASE MANAGEMENT CLIENTS SELF-REPORTED THEY HAVE MADE POSITIVE CHANGES

#changingtheodds

Housing and Financial Empowerment Services

255

THE NUMBER OF HOMES WE HELPED FAMILIES BUY

125

FAMILIES IMPROVED THEIR CREDIT SCORES

120+

FAMILIES INCREASED THEIR SAVINGS ACCOUNTS

#changingtheodds

Community Services

91%

OF CHILDREN ENROLLED IN CP'S AFTERSCHOOL PROGRAM CONSISTENTLY ATTENDED SCHOOL

84%

OF THOSE KIDS REPORTED INCREASED AWARENESS, ABILITY AND INTENT

88%

OF OUR MENTEES GRADUATED THE PROGRAM SUCCESSFULLY

#changingtheodds

CP Promise

I will do EVERYTHING IN MY POWER
to help create a relationship
between us
that is safe, supportive and respectful.
I Will value your voice; without judgment.
I promise to be reliable, to be present with you,
and to never allow you to FALL THROUGH THE CRACKS.
You Already Have great strength
so I am not here to “fix” you.
Together we will learn from each other
AND WE WILL use your strengths & experiences so that
you can help yourself improve your life and meet your goals.
At the END OF OUR TIME TOGETHER,
you will be better off as a result of our partnership.

Recognition

The name Community Partners says it all. Without the community and supporters like you, our partners, the success of Changing the Odds would not be possible. Thank you!

BOARD OFFICERS

Allison LaBossiere, Chair
Charlotte Pelton, Vice Chair
Brian Lynott, Treasurer
Cornesha Dukes-Chisholm, Secretary

BOARD MEMBERS

Andrea Stephenson
Blanca Francisco
Charlyn Lowery
Malerie Pacsi

PRESIDENT EMERITUS

John Corbett

SENIOR LEADERSHIP

Scott Hansel, *Chief Executive Officer*
Gregory Demetriades, *Chief Financial Officer*
Pattie Bremekamp, *Chief Operations Officer*
Susan Eby, *Vice President of Child and Family Mental Health Services*
Jaime-Lee Brown, *Vice President of Community Services*
Lynda Charles, *Vice President of Housing Services*

Changing Generations By Changing The Odds.

**Help Change The Odds.
Invest in Palm Beach County.**

cp-cto.org



Contact Us/Donate

2001 Blue Heron Blvd. W.

Riviera Beach, FL 33404-5003

561.841.3500

www.cp-cto.org

Follow Us



#changingtheodds

Housing
Partnership, Inc.



Parent-Child
Center, Inc.



Funding for Changing the Odds Provided in Part by these Valued Partners:

